

+ OPTIONAL FINISHED BASEMENT \$35,000

2,069 SQFT (UPPER) + (OPTIONAL LOWER)

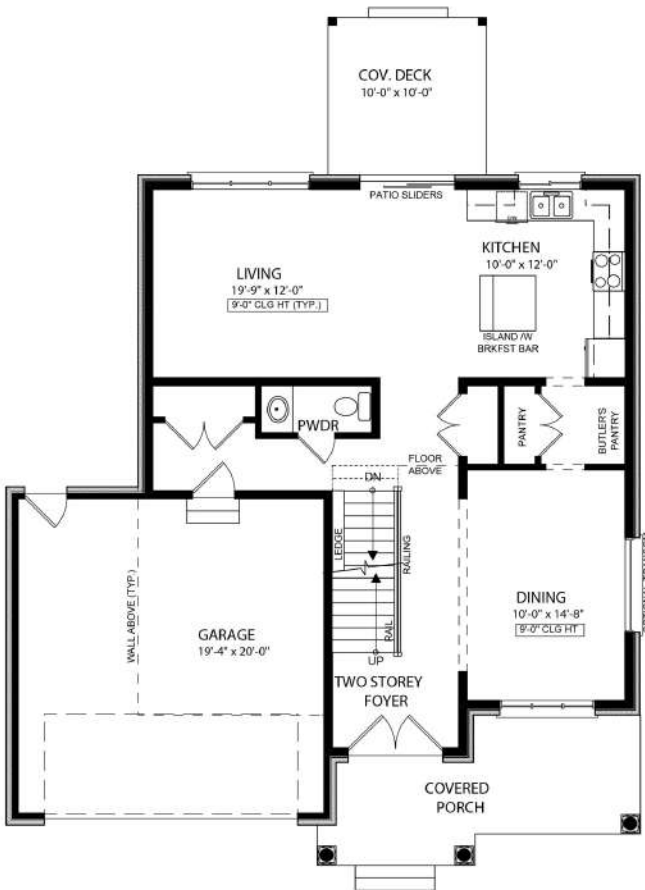
4 BEDROOM | 2.5 BATH

OPTIONAL IN BSMT 1 BED, 1 BATH

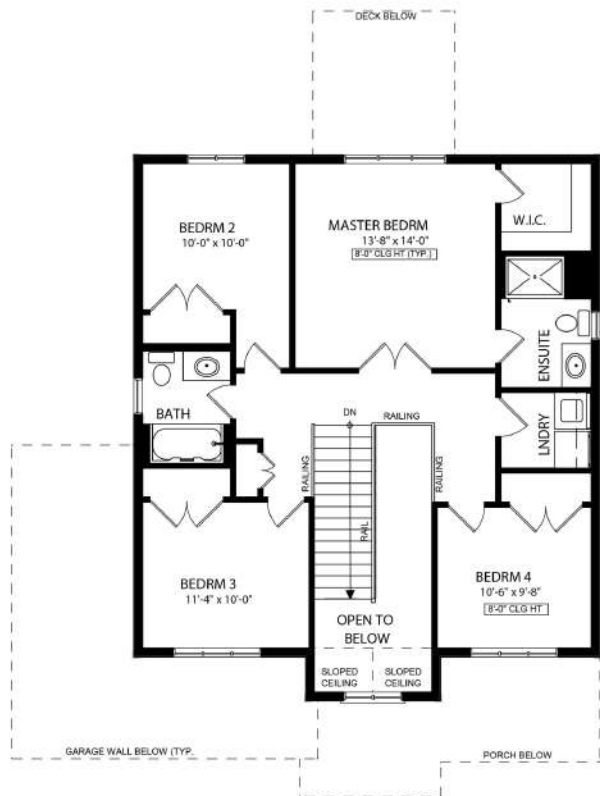
TWO STOREY

WIDTH - 40'-0" DEPTH - 41'-4"

TOTAL - 1,915 SQ. FT
2,069 SQ. FT INCL. OPEN BELOW



MAIN FLOOR PLAN - 954 SQ. FT



UPPER FLOOR PLAN - 961 SQ. FT
ADD 154 SQ. FT FOR OPEN BELOW